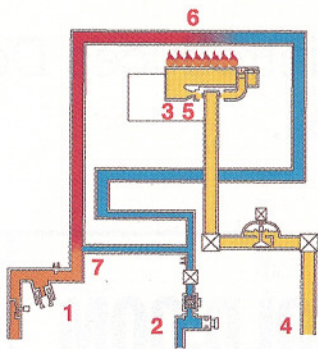


# TANKLESS WATER HEATERS

Also called an “on demand” water heater, a tankless heater attaches to the home’s plumbing system and warms water (using electric, gas, or propane power) only when it is needed. This eliminates standby losses—energy wasted by heating water and keeping it warm while it sits unused in a storage tank. Programmable, the tankless unit, which is about the size of carry-on luggage, gives the user the ability to control water temperature in different locations throughout the house; installing one qualifies homeowners for a \$300 federal energy tax credit. Rheem makes tankless propane and gas models that can be hooked up indoors or outdoors. They come in three capacities: The largest, a 7.4-gallon-per-minute (gpm) whole-house unit provides enough water to run three showers simultaneously. 800-621-5622, Rheem.com. The largest unit offered by Rinnai Continuum provides up to 8.5 gpm; the smaller model, 5.3 gpm. Both can be installed indoors or out. 800-621-9419, foreverhotwater.com. Takagi

makes only gas models and just introduced the T-K jr., the company’s smallest unit, which delivers up to 5.8 gpm. It is perfect for a home with just one or two bathrooms. 888-882-5244, takagi.com.



## HOW A TANKLESS WATER HEATER WORKS

1. Open hot-water tap.
2. Cold water enters unit.
3. Fan turns on.
4. Gas enters unit.
5. Burner turns on.
6. Cold water is heated in the heat exchanger.
7. Hot water is mixed with bypassed cold water for final outlet temperature.